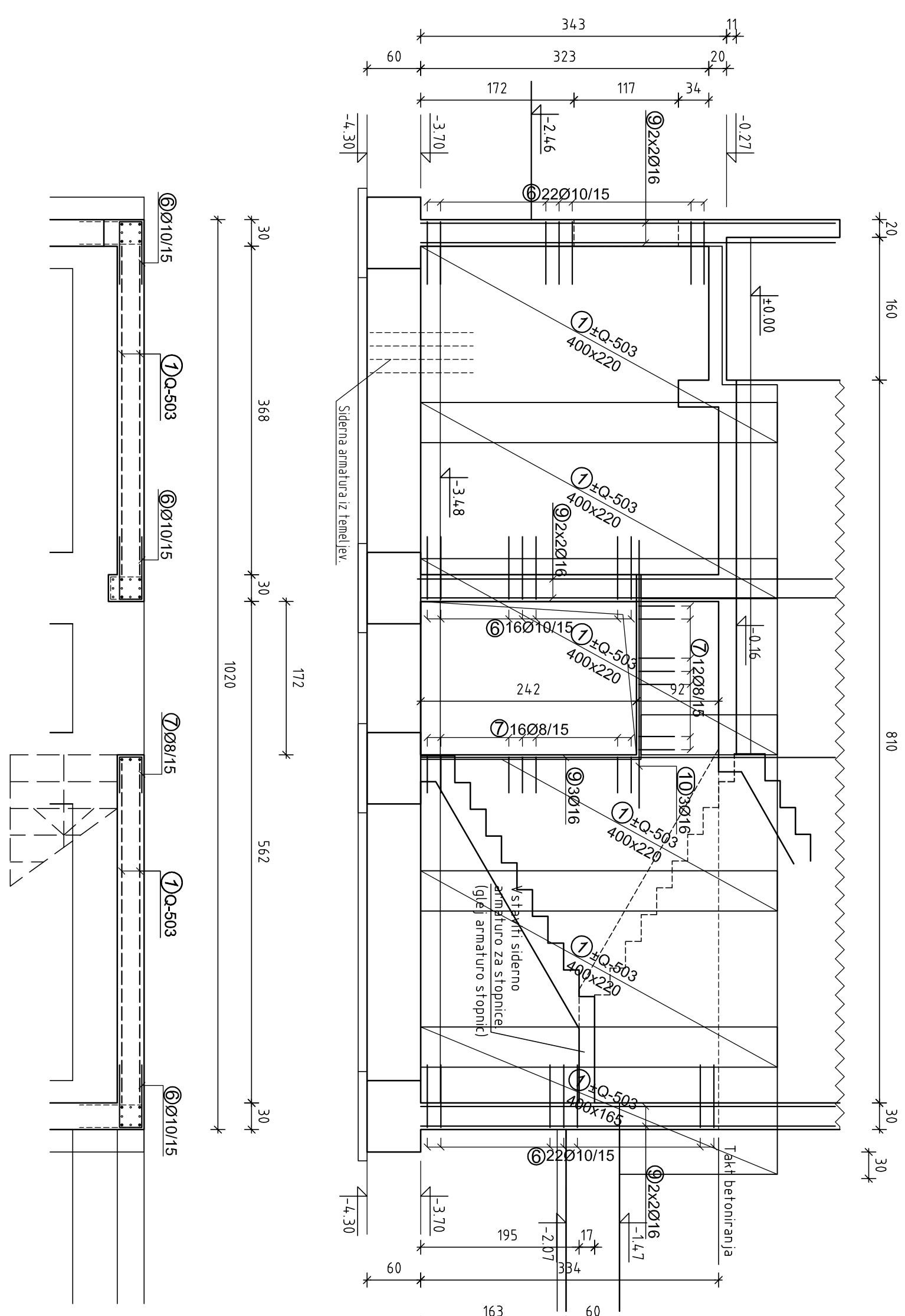
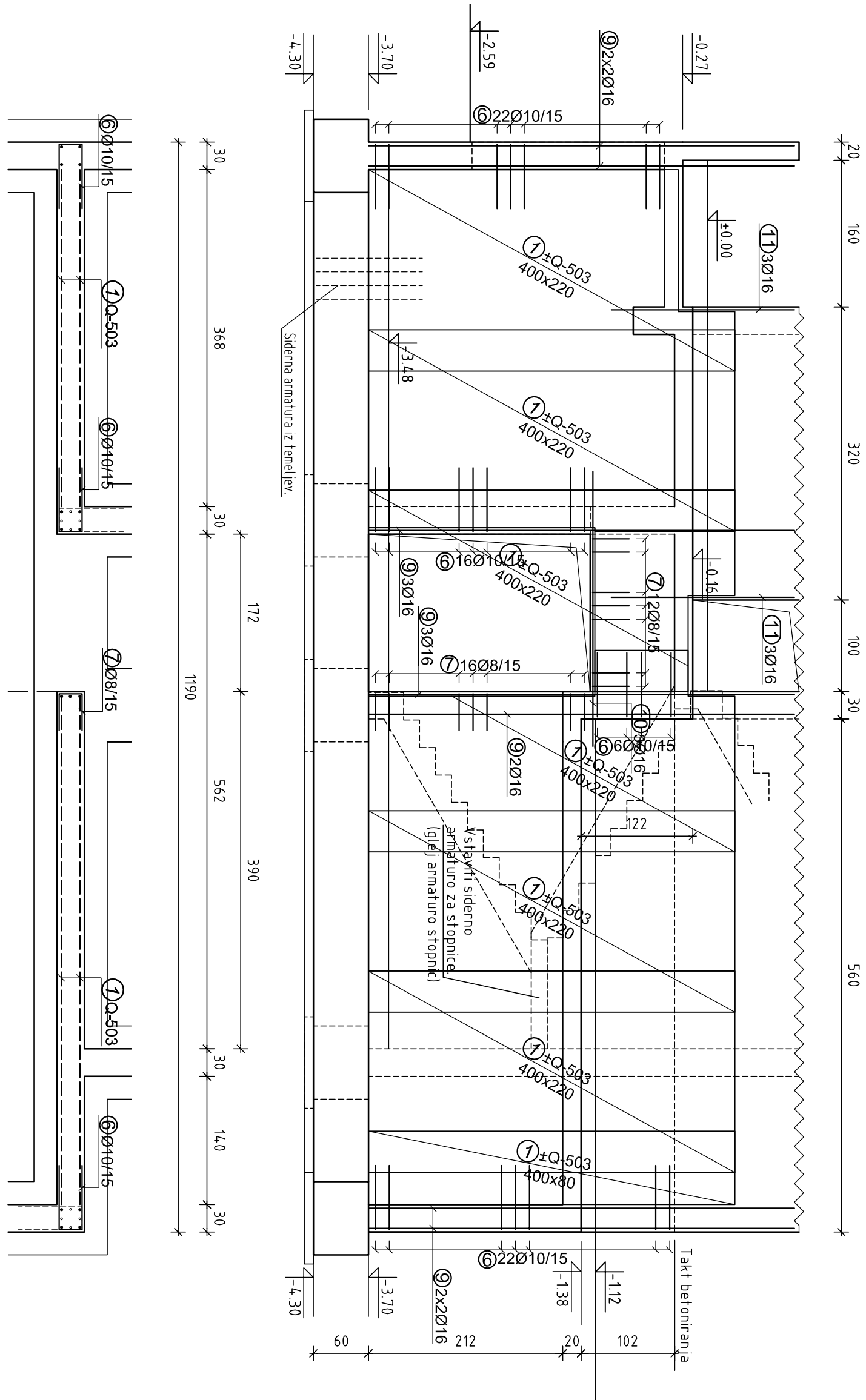


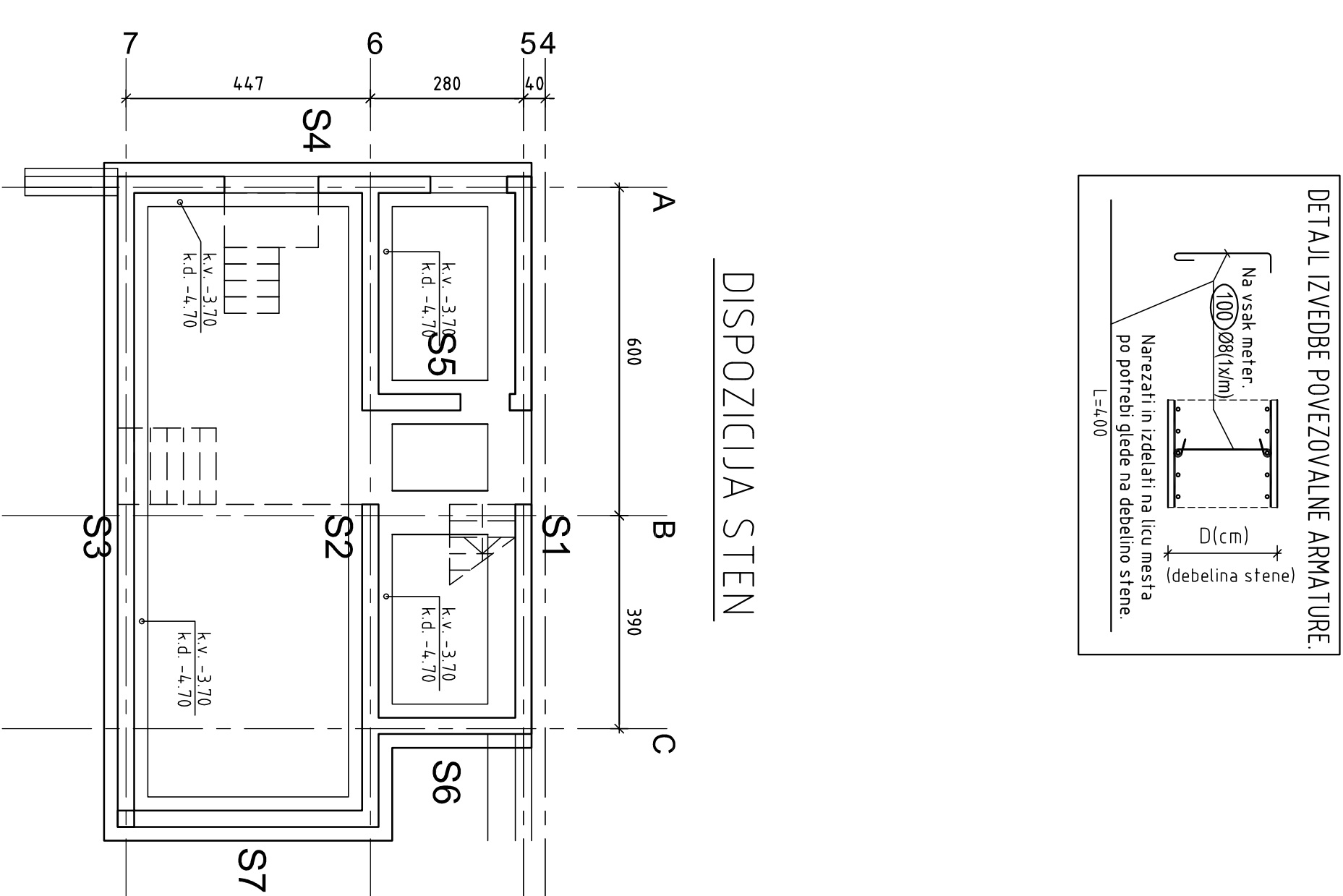
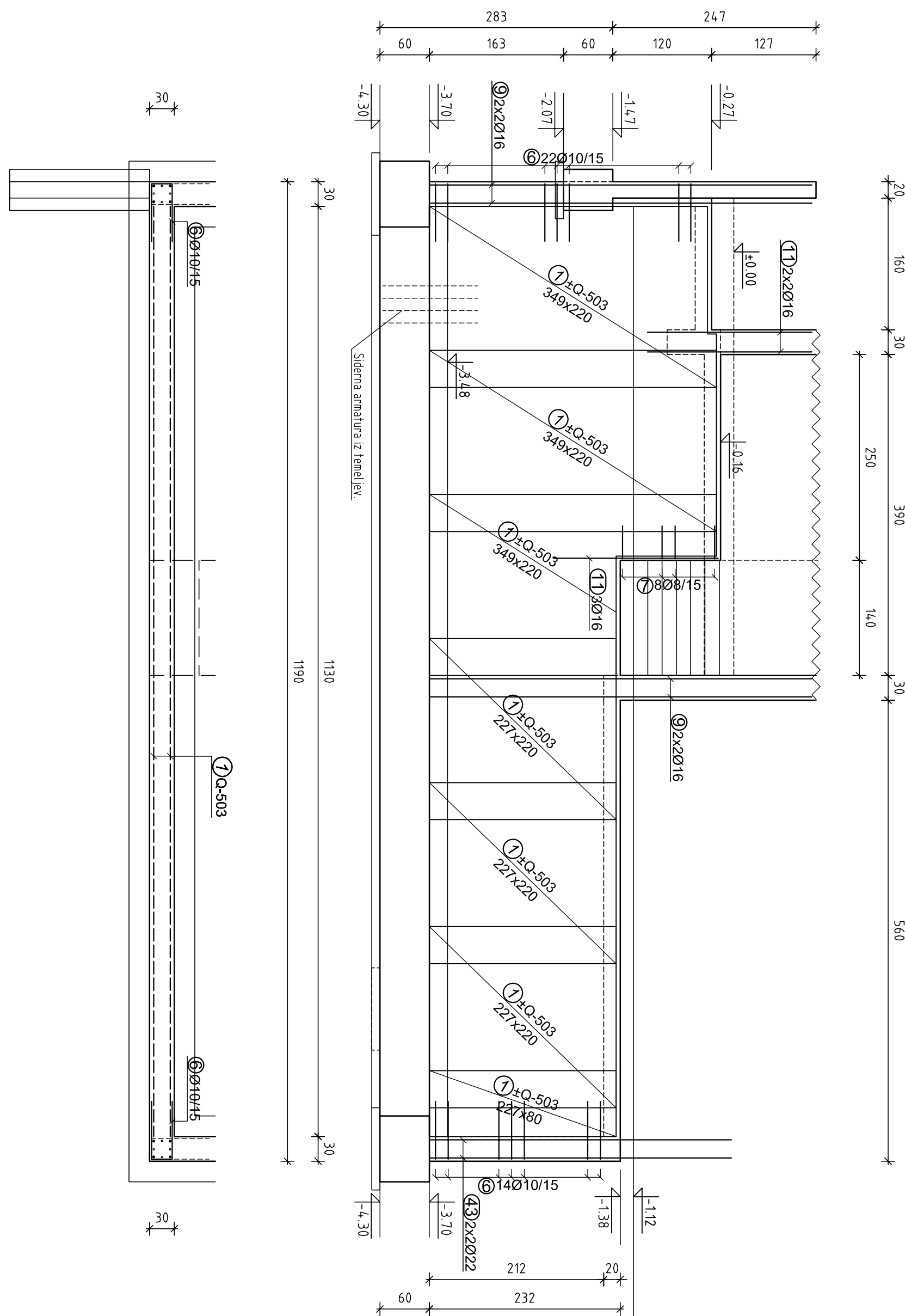
STENA - S1



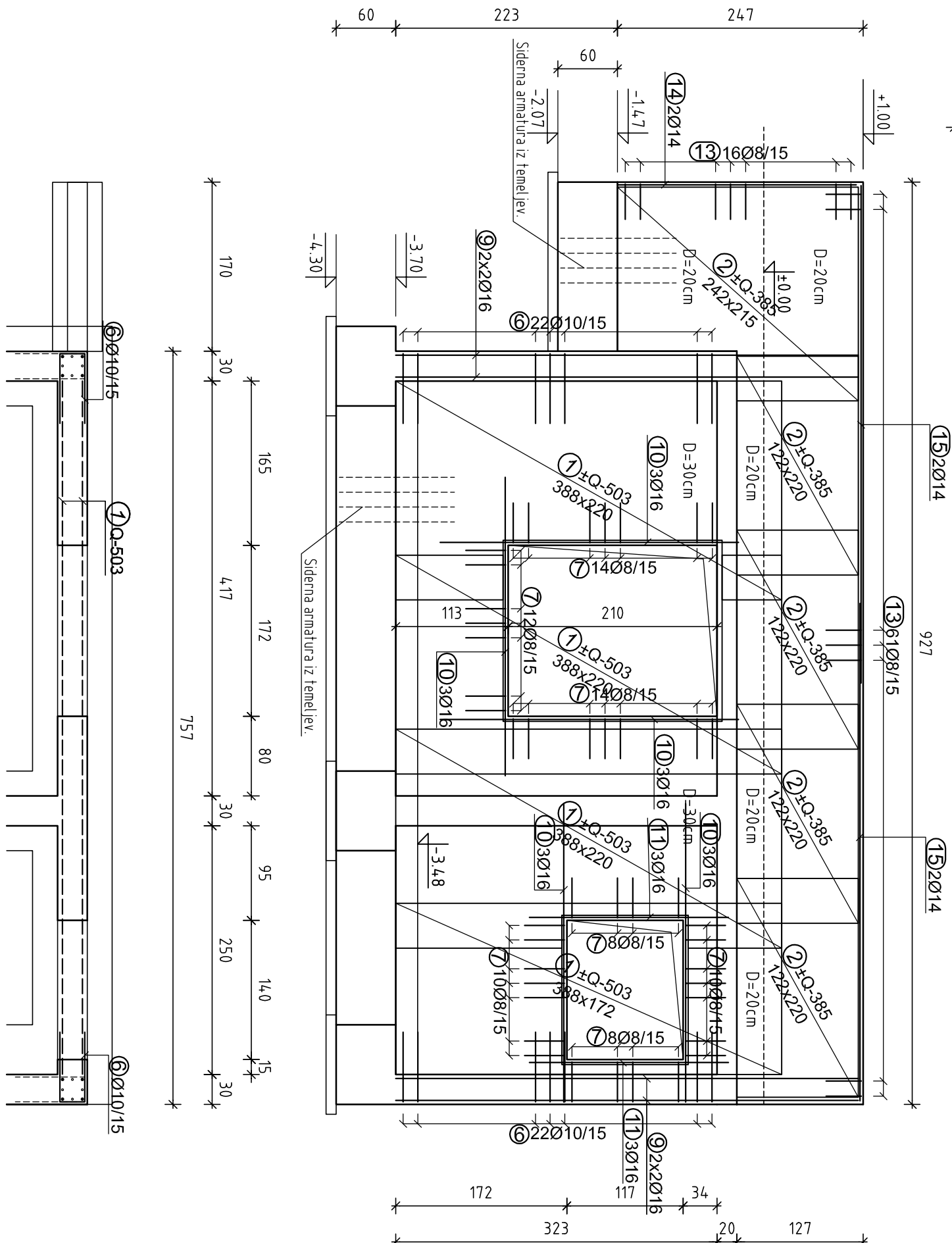
STENA - S2



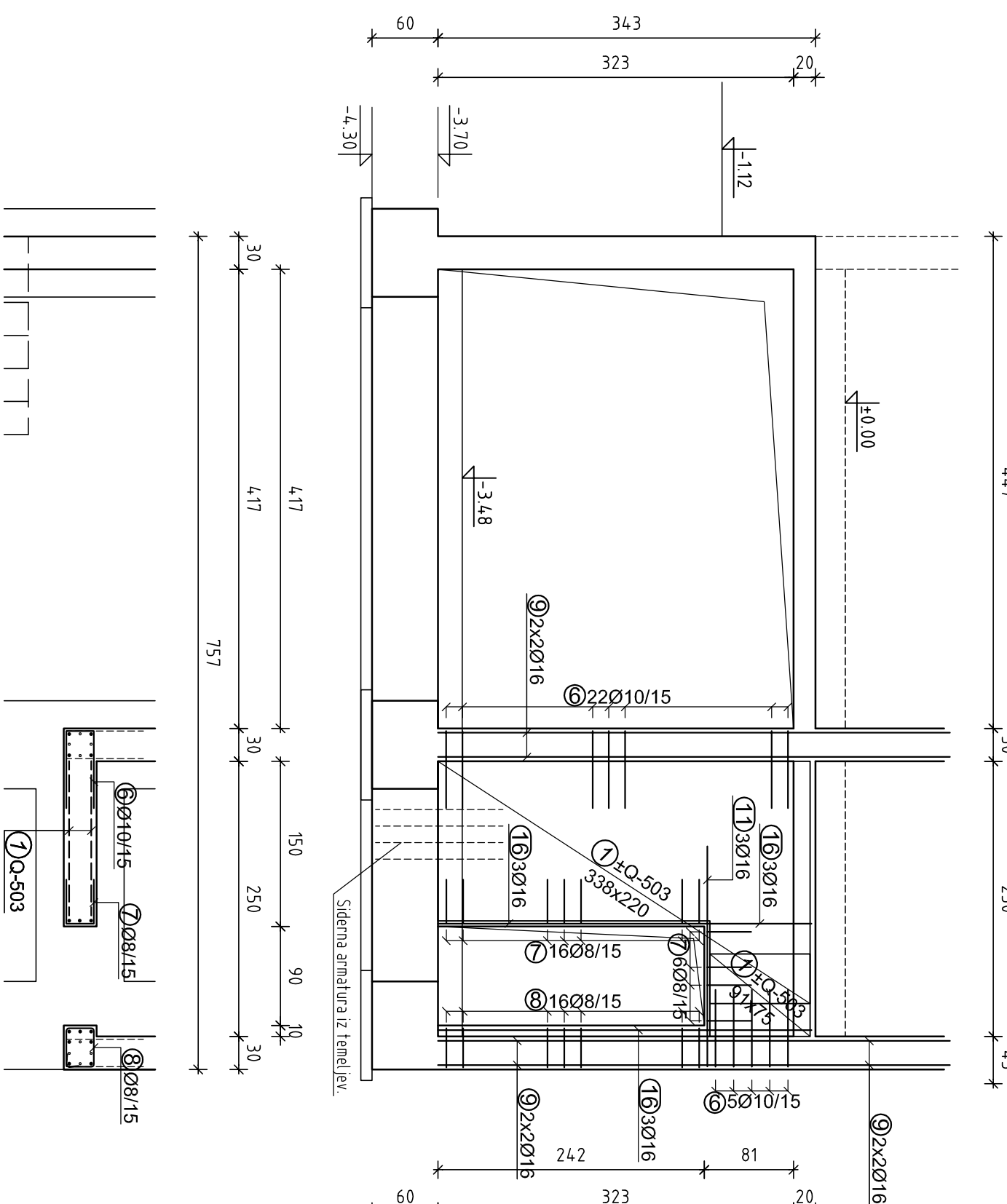
## STENA - S3



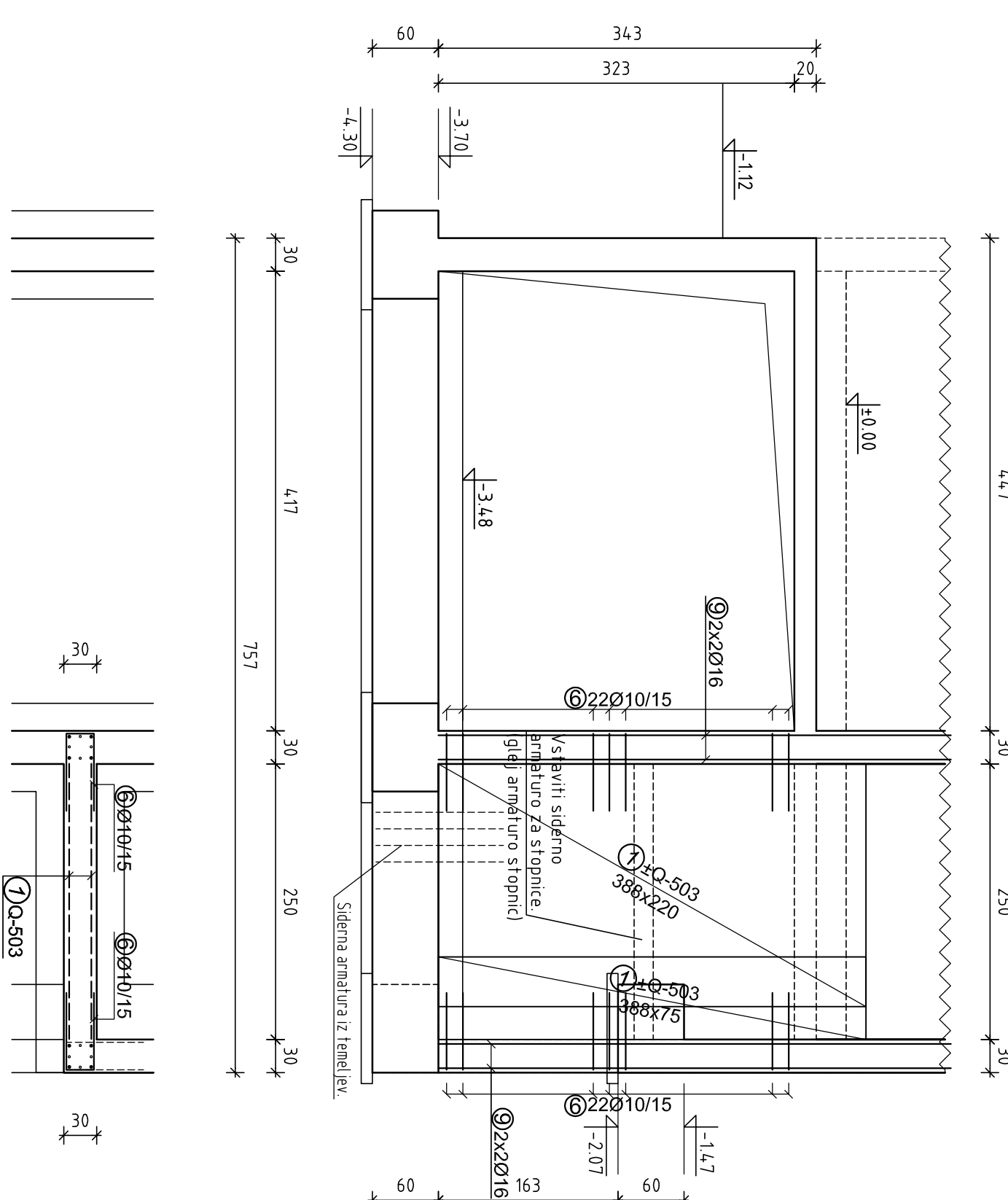
STENA - S4



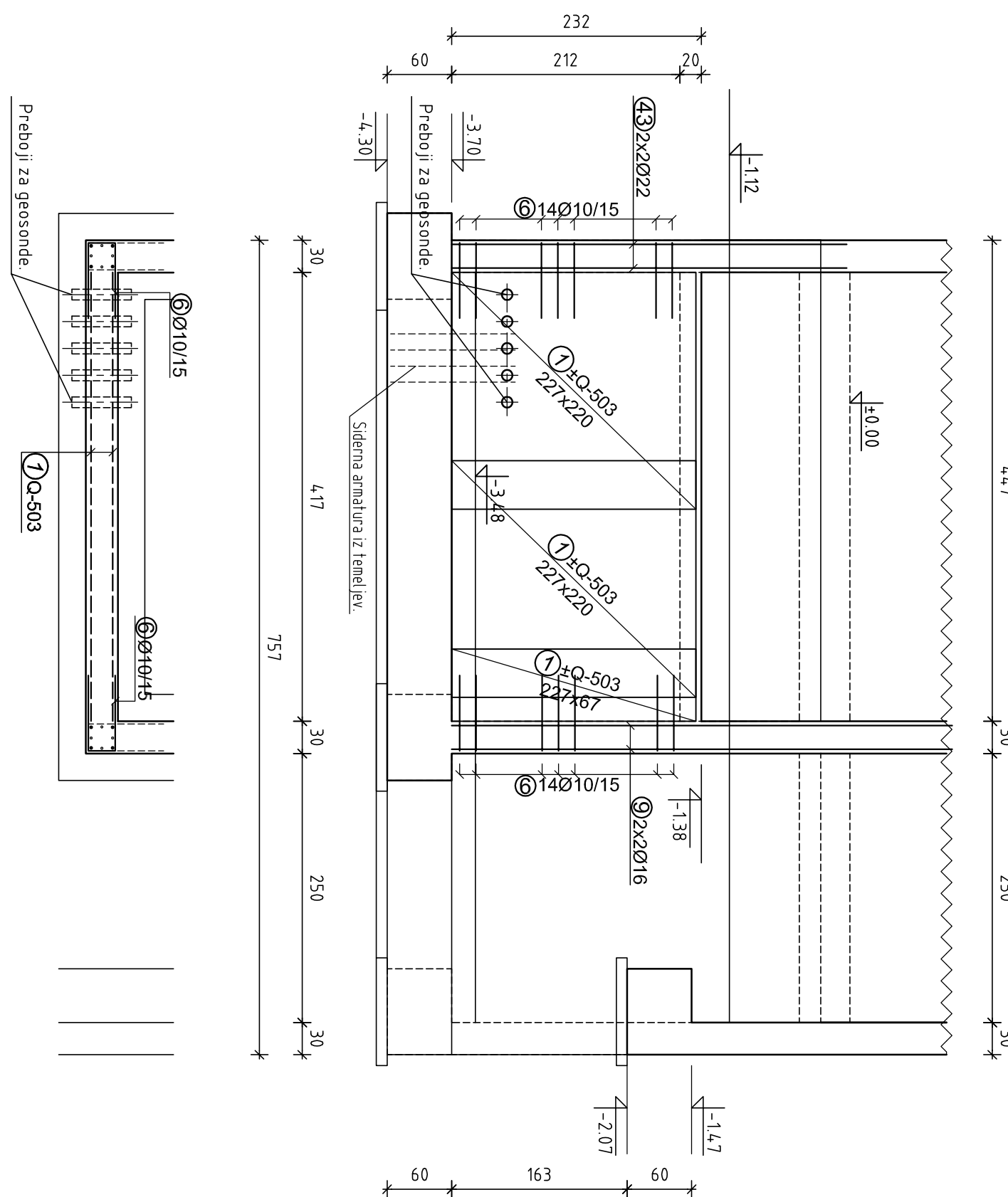
STENA - S5



## STENA - S6



STENA - ST



OPOMBE

-BETON C 30/37 XC1

-ARMATURA B500

-ZAŠČITNI SLOJ BETONA NAD ARMATURO je 2.5cm

-pri opoženju prebojev in odprtih prever  
načrte elektro in strojnih instalacij

načrte elektro in strojnih instalacij

-preklap armaturnih palic znaša 50x $\phi$ palice merjeno v cm

–v enem preseku se lahko preklapa le 50% palic, zato je potrebno polagati vsako drugo v obratni smeri

[illegible]